



Driving content in the right direction

eFLOW™ Invoice

Complete automation from invoicing to payment

In your organization:

- How many people are involved in recording, validating and approving vendor invoices?
- How often are invoices re-issued, misplaced, copied, misrouted or double-paid?
- How much time is spent searching for information concerning invoice issues?
- How can you avoid problems in business relations as a result of late payments?
- How can you track the full cycle of any transaction from invoice receipt to payment release?
- How much do you lose in early payment discounts by paying late?

Top Image Systems™ (TIS™) understands the complex nature of the Purchase-to-Payment (P2P) cycle and our market-leading eFLOW™ Invoice solution brings order to chaos, and ensures that finance is concerned with profit margins, eradication of errors and creating further opportunity for enhanced profit contribution.

eFLOW Invoice captures, classifies, approves and validates every kind of invoice, of any size and in any format – paper or electronic. It integrates with any existing financial workflow and ERP system, such as SAP, Oracle, and many more. Alternatively eFLOW Invoice can also run the exception handling and approval workflow passing the completed transactions to your ERP system.

Atkins Global process more than 200,000 invoices per year.

“TIS quickly implemented the system to meet all our requirements. The technical solution has helped us deliver a 60% reduction in headcount.”

Kevin Ingham, Head of Accounts Payable, Shared Services Facility

eFLOW's 'One platform. Multiple choices' approach means that organisations using eFLOW Invoice can easily apply the same eFLOW technology to any area of their business; e.g. Order To Cash, Accounts Receivable or Digital Mailroom, all from a single investment.

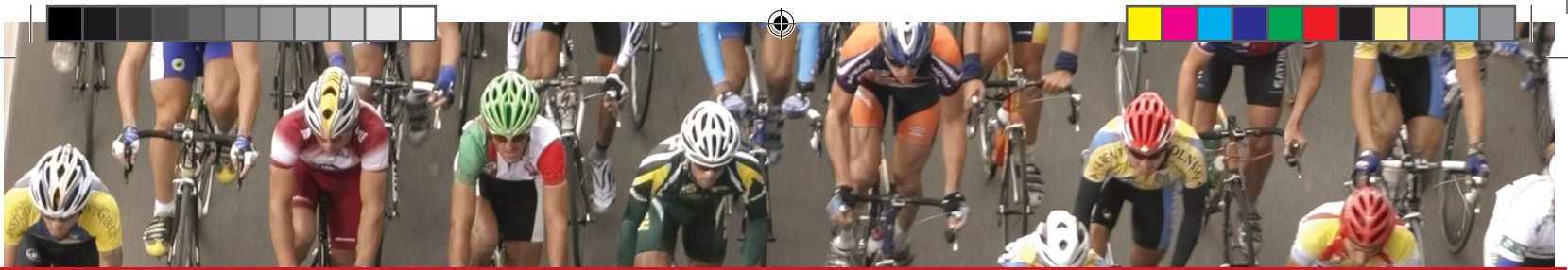
The eFLOW Invoice solution, based on 20 years of experience, has made TIS a market leader. We have installed hundreds of eFLOW Invoice projects throughout the world.

eFLOW Invoice advantages

- A non-template solution for paper based invoices, eFLOW's 'Freedom' technology understands the content and layout of any invoice, which ensures industry leading extraction statistics right out of the box
- 'Fuzzy' validation routines using all vendor data to ascertain the best candidate. PO data is validated at line item level and paired for automatic posting, which drives impressive straight-through processing rates and leads to an accelerated business process



Top Image Systems



TIS BUSINESS PROCESS SOLUTIONS

- Non PO invoice data is validated against specific business rules in order to automatically code and route for approval to the invoice or budget owner
- Uniform platform for invoice examination and easy multi-stage approval
- Simple and consistent processes handle all types of invoice, of any structure, regardless of format: paper, EDI or e-invoice
- Early payment discounts and elimination of late fees
- Full SAP integration and to other leading ERP platforms including Oracle

A solution for all your needs

eFLOW Invoice includes eFLOW™ Invoice Reader and eFLOW™ Invoice for SAP modules:

eFLOW™ Invoice Reader technology understands the content of an invoice and validates the information including specific country regulations and business practices.

An Optional Workflow module handles invoices that were not automatically posted after export. These are delivered to the eFLOW Invoice Inbox for efficient handling of complex multi-line PO invoices that contain discrepancies against existing purchase orders and the automatic coding and routing of Non PO invoices to the correct business user.

eFLOW Invoice Reader will help you deliver to your organisation;

- Cost savings of up to 85% compared to manual processing
- Fewer resources to operate the AP department as staff manage by exception only
- Work processes that are more efficient by eliminating errors and duplicate payments from the process
- Significantly reduced P2P cycle time
- Ensures that payment terms are met, improves vendor relations and facilitates early payment discounts
- ROI (Return on investment) typically within 12 months or less

eFLOW™ Invoice for SAP has all the functionality and accompanying benefits of eFLOW Invoice Reader but it is also a fully SAP integrated solution. A solution that is sure to please any existing SAP user as their familiar working environment does not change, which in itself is a huge benefit. All invoice work items that were not automatically posted after export are delivered to the eFLOW Invoice for SAP Inbox for rapid efficient parking/posting. The solution is especially useful for posting complex multi-line

MM invoices that contain discrepancies against existing purchase orders and for automatically coding and routing FI invoices to the correct business user.

The module is based on a specially constructed exception handling user interface with complete SAP look and feel. The user interface not only uses standard FI and MM invoice editing transactions but also contains additional features such as invoice image display in the same transaction.

eFLOW Invoice for SAP adds greater value to your SAP investment. You benefit from:

- A fully integrated and highly intuitive Intelligent data capture and accounting solution for SAP that will free up your skilled staff from manual data entry tasks, increasing the efficiency of validation, approval and posting of invoices, and reducing total processing time
- Increased visibility, maximum transparency and excellent internal control
- Discount potentials for early payment, plus avoiding late payments
- Enhanced tools for handling legal compliance and audit processes
- Increased accuracy and timeliness of financial reports
- ROI (Return on investment) typically within 12 months or less

About TIS

Top Image Systems™ (TIS™) was founded in 1991 and is a public company traded on NASDAQ and TASE (symbol: TISA). The company operates internationally with branch offices in Germany, the UK, the U.S., Latin America, Singapore, Japan, and with local representatives across Europe and the Pacific Rim.

Our ECM solutions, evolved over 20 years, have been placed in 800 enterprise-level installations in more than 40 countries. They are supported by a closely-integrated network of distributors, system integrators and value added partners. TIS partners are leaders in their field, and include SAP, Oracle, IBM, Accenture, Xerox, CACI, Kodak, Fujitsu, Williams Lea, Bosch BCC, MFM Hofmaier, Scanservice and Braintribe.

For more details:
tis_uk@topimagesystems.com

www.topimagesystems.com



Top Image Systems